

# Mission:

For the glory of God,  
Lighthouse Mission  
Ministries desires to  
minister to needy men,  
women, and children  
through the provision  
of compassionate  
services in the name of  
Jesus Christ.

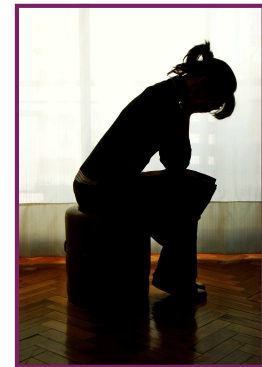


Lighthouse Mission Ministries

PO Box 548  
Bellingham, WA 98227  
(360) 733-5120  
[www.TheLighthouseMission.org](http://www.TheLighthouseMission.org)



## Lighthouse Mission's Agape Home



Serving women and children  
who are homeless

## Services

- The Home is open to single women and single women with children.
- Provides a warm and safe environment.
- Three daily community meals are available at the Mission building.
- Onsite laundry is available.
- Women are required to attend a mandatory house meeting every night, and are expected to abide by the rules.
- Guests are required to complete their daily assigned chore and keep their room clean.
- Women are required to attend a weekly meeting with the Agape Manager
- Personal items and clothing are distributed at no cost to those in need.
- A monthly donation is requested from guests who have an income.
- There are no time limits on how long you may stay at Agape Home. We only ask that you abide by the rules and are working to improve your circumstances.
- Lighthouse Mission's Agape Home is a privately funded Christian ministry and reserves the right to refuse services.



Agape Home is a safe harbor for single women and single women with children who are homeless.

Agape Home is not primarily an Emergency Shelter. Housing preferences will be given to Whatcom County residents, referrals from local domestic violence agencies, and first-time shelter requests.



### **Things to keep in mind:**

- Space available is not a guarantee of admission to Agape Home.
- Guests may be asked to submit to drug testing and room inspections.
- Some guests may not be appropriate for congregate living.
- Agape Home reserves the right to deny services to anyone.

### **Things to ask yourself:**

- Are you within our level of care and appropriate for congregate living?
- Are you willing to address issues that led to your homelessness?
- Are you willing to remain drug and

### **Start the Admission Process:**

All Agape Home admission intakes are by appointment only.

- To guarantee the best use of everyone's time, please complete the Agape Home Intake Form before scheduling an appointment.

Intake Forms are available online at  
[www.NewAgapeHome.com](http://www.NewAgapeHome.com)

Or

Monday—Friday 9AM-5PM at the  
Drop-In Center (1013 Holly Street)

- Once you have completed the Intake Forms, you may contact Agape Home to make your admission appointment.
- Contact: Pat or Christine at (360) 733-3796 or (360)733-5120 Ext. 135

Please bring in your completed forms to your scheduled appointment.

